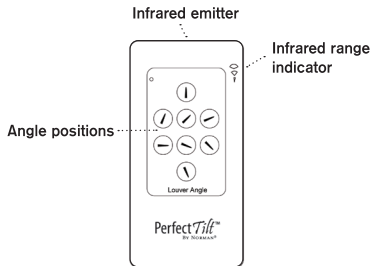


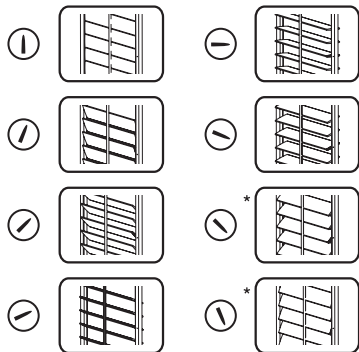
PerfectTilt Remote Control

1) The Control Panel



2) Louver Positions

Press appropriate button for desired louver position



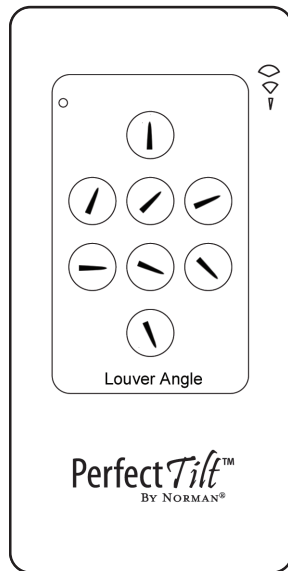
*Not available for angle top and arch on top.

User Guidelines

- Keep the remote in a safe place out of small children's reach. If opened, the remote control contains small parts that, if swallowed, may cause a choking hazard.
- Do not damage or drop the remote. Mistreatment of the remote could damage the circuit board.
- Do not use any spray solvents, alcohol or abrasives to clean the remote. To clean, use a slightly moistened soft cloth.
- Store the remote in a clean, dry area. Rain, water, or other moisture may damage the circuit board.
- Keep the remote away from direct sunlight, heaters and other heat sources. High temperatures could damage the circuit and batteries, and deform the remote housing.
- Keep away from extreme cold. This may create moisture and cause damage when the remote is moved to a warmer area.
- Dispose or recycle batteries according to local laws.
- 2 year limited warranty on materials and craftsmanship

Troubleshooting

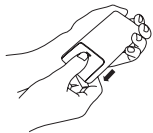
- Do not try to disassemble the remote. There are no serviceable parts inside.
- When the batteries on the remote or the motor are weak, the control range will get shorter or fail. Please replace the batteries at this time. (see Battery Replacement)
- If batteries fail, louvers can be moved by hand to the desired position.
- When you press a button to select an angle position, all louvers may not move at the same time due to their starting louver positions. However, all louvers will end at approximately the same position.
- Should the remote or the motor fail, please contact your retailer for assistance.



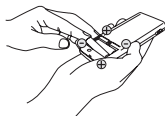
**Motorized Shutter
Control System**

USER GUIDE

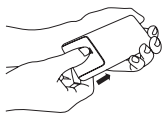
Remote Battery Installation



Gently press and slide cover to open.



Place two AAA lithium or alkaline batteries inside as indicated. Batteries must be new and alike. Do not intermix the brands.



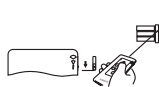
Replace cover.

Synchronizing the Remote with the Shutter Panel(s)

Each remote has a preset ID that is unique to each remote. The motor will record the ID when the sensor receives the infrared signal the first time. The shutter panel will react **ONLY** to that specific remote. The recorded ID will be lost when the batteries in the motor are removed.

To change the shutter panel remote, disconnect the motor batteries, reconnect and point the remote at the sensor and press any button.

Infrared Signal Control



A) Individual Panel Control - When synchronizing, move the switch to the bottom position. **Point directly at the sensor** and press any button. The infrared signal will now control the specific shutter panel within 15 ft.



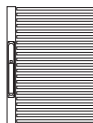
B) Wide Control - When synchronizing, move the switch to the middle position. **Point at the middle of the selected panels** you wish to activate and press any button. The infrared signal will now be sent to a wider area and control several shutter panels within 22 ft.



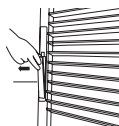
C) Extra Wide Control - When synchronizing, move the switch to the top position. **Point at the middle of the selected panels** you wish to activate and press any button. The infrared signal will now be sent to the widest area and control even more shutter panels within 36 ft.

PerfectTilt Motor Battery Replacement

Please read the instructions on the battery cover.

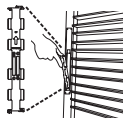


Locate the motor on the back of the shutter panel, and remove the screws on the motor cover.



Remove the battery cover by gently releasing the latch and lifting the cover off.

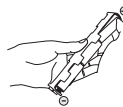
PerfectTilt Motor Battery Replacement (cont'd)



Gently press down and out to remove the battery cartridge.



Load the batteries into the cartridge as indicated by inserting and sliding the battery down. Please note - use 6 AA lithium or alkaline batteries. All batteries must be new and alike. Do not intermix the brands.



Replace the battery cartridge into the motorized unit; replace battery cover and motor cover.



If the motorized panels will not be used for several months, remove the battery cartridge and replace it when the panels will be back in use.

Low Battery Indicator

The red light on the remote will blink 6 times to show that the remote control's batteries need to be changed.

If the red light blinks once on the remote but the louvers do not move, then the batteries in the motor will need to be replaced.